



# CRYSTAL

## PRODUCT DESCRIPTION

CRYSTAL transparent matt is a single-component paint based on self-crosslinking acrylic resin in aqueous dispersion, ready for use.



## PRODUCT APPLICATION

- Filler and strengthening additive for concrete, stone, marble and bricks
- Protective finish of surfaces coated with AQUASCUD and GRIPPER (see relevant technical data sheets)

## ADVANTAGES

- Stable under UV rays and resistant to yellowing
- Reduces absorption of water, oil and liquids in general
- Colourless (darkening in the surface might occur)
- Improves wear resistance
- Compacts the surfaces allowing for easier cleaning
- Easy and quick application

## PREPARATION AND APPLICATION **Preparing the surfaces**

The surfaces to be treated with CRYSTAL must be perfectly clean, free from grease and oil, dry and dusted.

### **Preparing the product**

CRYSTAL is ready to use, does not require dilution with water.

### **Application**

Stir CRYSTAL before use, then spread evenly the first coat of product using the PLASTIVO ROLLER or a brush with medium-long bristles or an airless machine.

Leave to set for 6-8 hours in normal conditions (room temperature +20°C; room humidity 60%) and then apply the second layer in the same way.

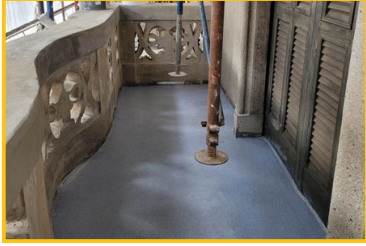
At the end of application clean the tools well under running water.

### **Curing**

Let the first coat dry at least 12- 24 hours in suitable environmental conditions (room temperature +20°C; room humidity 60%) before walking on the treated surface.



# CRYSTAL



References available at [www.volteco.com](http://www.volteco.com)

**CONSUMPTION AND YIELD** 0,30÷0,34 l/m<sup>2</sup> depending on the roughness of the surface.

**PACKAGING AND STORAGE** CRYSTAL is packed in 14 l and 3 l containers.  
The product must be stored in a dry place without being exposed to frost and heat (maximum temperature: 40 °C) or direct exposure to the sun before being applied.  
Storage time 12 months.

**WARNINGS - IMPORTANT NOTES** Do not apply CRYSTAL in low temperature conditions (lower than +5 °C) and high humidity, on surfaces with a temperature above 40 °C or in the likelihood of rain within 3 hours after the product is applied.  
A high temperature can significantly reduce its workability time.  
Do not apply CRYSTAL under relative humidity conditions higher than 8%.

## PHYSICAL AND TECHNICAL SPECIFICATIONS

Specification	Values
Appearance	Matt transparent paint
Workability time at +20 °C and 70% RH	dry dust free: 2-3 hours through dry: 24 hours
Specific weight	0,91 kg/l

**SAFETY** Refer to the related Safety Data Sheet.

**COPYRIGHT** © Copyright Volteco S.p.A. - All rights reserved.  
Information, images and text found in this document are exclusive property of Volteco S.p.A.  
They may change anytime without prior notice.  
Updated versions of this and other documentation (specification, brochure, other) are on [www.volteco.com](http://www.volteco.com).  
In case of translation text may contain technical and linguistic inaccuracies.

**LEGAL NOTES** Note for buyer/installer:  
This document prepared by Volteco S.p.A. is provided as an aid and guideline for the buyer/installer.  
This does not take into consideration the details of each single operational context, for which Volteco S.p.A. will not be held liable.  
This does not change and does not extend the obligations of Volteco S.p.A.  
It may vary and the installer is therefore required to update his/her information prior to each application by referring to [www.volteco.com](http://www.volteco.com).  
The above clarifications extend to the pre-post-sales technical/commercial information of the commercial network.