



I-PLUG

PRODUCT DESCRIPTION

I-PLUG is a ultra-quick setting waterproof mortar, ideal for immediately closing water leaks.



PRODUCT APPLICATION

- Quick sealing of localised water flows, including pressurised
- To rapidly prepare and finish waterproofing
- To seal cracks, together with hydro-expansive mastic AKTI-VO 201

ADVANTAGES

- Excellent waterproofing
- No shrinkage
- Instantaneously block water flows, even if pressurised
- High mechanical resistance
- Easy workability
- Rapid-setting

PREPARATION AND APPLICATION

The preparation and installation data refer to normal environmental conditions (temperature +20°C; relative humidity 60%).

Create the seats for product application before starting, with width and depth of at least 2-3 cm, making sure there are no protruding concrete parts on the surface and roughen the surface, if necessary.

Clean the surface from any loose parts, salt, traces of grease and anything that could prevent even adhesion at the product to the wall surface.

Prepare the product mixture in small quantities preventively pouring water into the container (1/4 l per kg of product, equal to 24%) and then add the pre-mixture by mixing quickly with trowel until you obtain a homogeneous and malleable consistency.

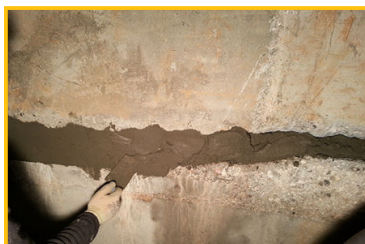
Work the mixture by hand for approximately 15"/30", based on the ambient, water and product storage temperatures, i.e. until it begins developing heat.

Immediately apply, by firmly pressing the mortar in the opening and holding it in position until it finishes setting, 1' without moving your hand during this time interval.

The product must be mixed with warm water if the temperature is low.



I-PLUG



References available at www.volteco.com

CONSUMPTION AND YIELD

A 10-kg bag of the product yields 6 l of mortar.

PACKAGING AND STORAGE

The product is available in deaerated and sealed 10 kg polyethylene bags.
The products must be stored in a dry and indoor place at a temperature between 15 °C and 25 °C.
Do not expose to direct sunlight.
I-PLUG in the original packaging has a storage time of 18 months

WARNINGS - IMPORTANT NOTES

The product mixed with water must be used immediately.
Never regenerate the mixture by adding water.

PHYSICAL AND TECHNICAL SPECIFICATIONS

-	Initial setting time	Final setting time
Temperature at 20 °C	50"	60"
Temperature at 5 °C	140"	160"
Parameters subject to company Quality Control	Values	
Specific weight	> 1.95 kg/l	
Compressive strength:		
after 1 hour	> 20 N/mm ² (UNI EN 196-1)	
after 1 day	> 40 N/mm ² (UNI EN 196-1)	
after 28 days	> 50 N/mm ² (UNI EN 196-1)	
Flexural strength:		
after 1 h	> 2 N/mm ² (UNI EN 196-1)	
after 1 day	> 3 N/mm ² (UNI EN 196-1)	
after 28 days	> 4 N/mm ² (UNI EN 196-1)	

The quoted data are obtained in a laboratory at +20 °C and 60% RH.

SAFETY

Refer to the related Safety Data Sheet.

COPYRIGHT

© Copyright Volteco S.p.A. - All rights reserved.
Information, images and text found in this document are exclusive property of Volteco S.p.A.
They may change anytime without prior notice.
Updated versions of this and other documentation (specification, brochure, other) are on www.volteco.com.
In case of translation text may contain technical and linguistic inaccuracies.

LEGAL NOTES

Note for buyer/installer:
This document prepared by Volteco S.p.A. is provided as an aid and guideline for the buyer/installer.
This does not take into consideration the details of each single operational context, for which Volteco S.p.A. will not be held liable.
This does not change and does not extend the obligations of Volteco S.p.A.
It may vary and the installer is therefore required to update his/her information prior to each application by referring to www.volteco.com.
The above clarifications extend to the pre-post-sales technical/commercial information of the commercial network.