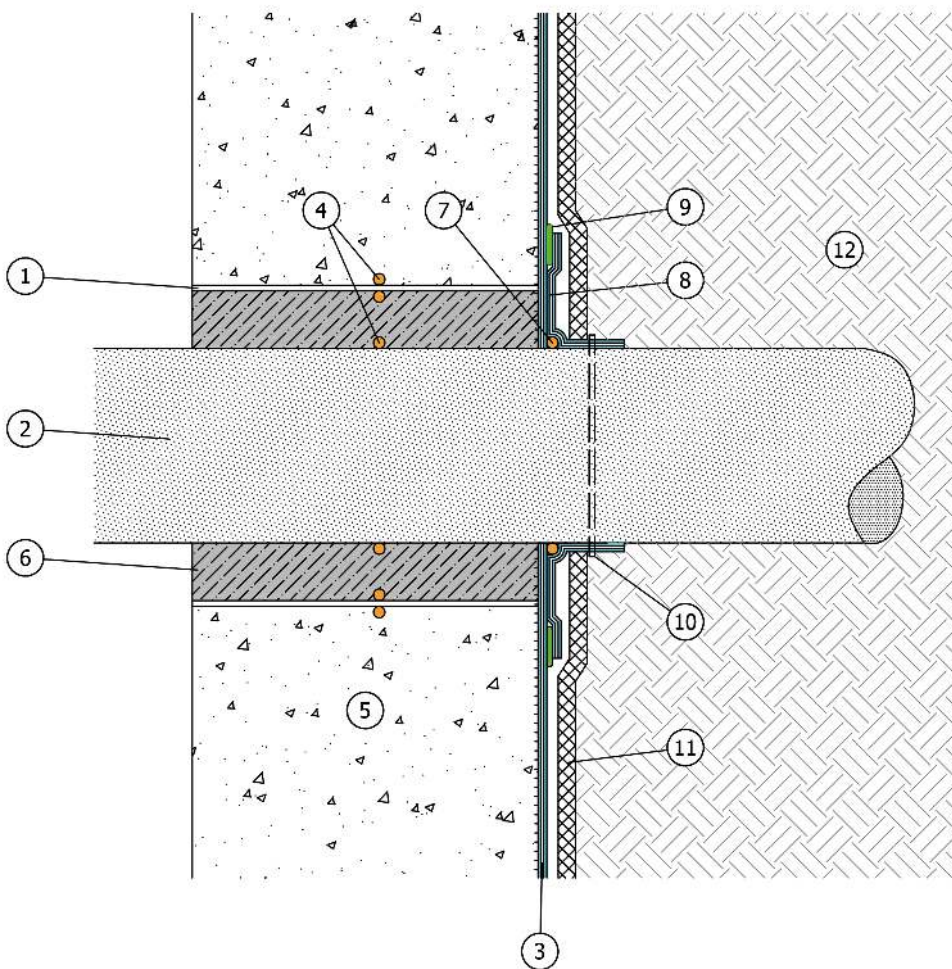


AMPHIBIA 3000 GRIP pre-applied installation - sealing penetrations with pipe sleeve

Field	Underground waterproofing
Type of work	Reinforced concrete
Boundary conditions	Aquifer
Construction	New
Excavation type	Confined
Type of material(s)	HYDRO-REACTIVE SYSTEM
Sequence of installation	Before pouring concrete
Level of risk	High
Type of protection	Waterproofing barrier



1. Pipe sleeve installed before pouring concrete
2. Penetration
3. AMPHIBIA 3000 GRIP
4. AKTI-VO 201 already crystallized before pouring concrete
5. RC structure suitable to withstand hydraulic pressures and exempt from defects
6. Filling with BI MORTAR LEVELLING SEAL
7. AKTI-VO 201 after casting concrete
8. AMPHIBIA 3000 GRIP patch all around the penetration
9. BI MASTIC and/or AMPHIBIA SAFETY TAPE
10. Hose clamp
11. Rigid insulation panel or non-woven textile (min 250 g/m²)
12. Well compacted soil without voids



PLEASE NOTE: Dilatation joints must be realized on the screeds, having position and length according to the Designer's specifics, and sealed with GARVO. The waterproofing SYSTEMS must be installed continuously all along the whole structure subjected to intervention, keeping the continuity between all waterproofed surfaces, horizontal and vertical; any kind of joint (e.g. dilatation joints on the screeds, structural joints etc.), penetration, corner and every possible crack must be sealed with suitable VOLTECO SYSTEMS, applied in continuity with one another (see VOLTECO technical data sheets), in order to avoid any chance of seepage. The structures must be suitable to withstand every kind of load that they will undergo. Dilatation joints must be realized on the screeds, having position and length according to the Designer's specifics, and sealed with GARVO. All structures have to be suitable to withstand all future loads

This proposed scheme (out of scale and released only for example purposes) and its implementation must be assessed and approved by the Designer and the Construction Supervisor in relation to the specific issues of the project and the building site. More information about the application, performances and technical data of the technologies that we have here described must be obtained from the product datasheets (also freely downloadable from the website www.volteco.it); those datasheets are considered part of this document.