

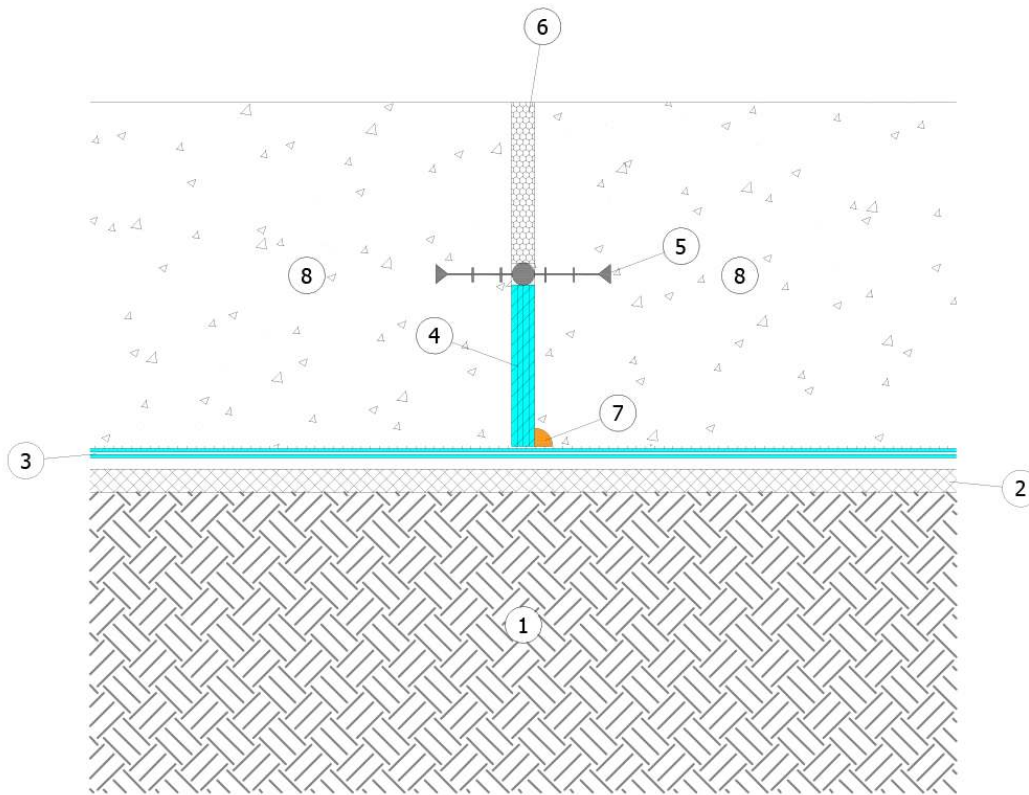
RC walls with AMPHIBIA - Vertical expansion joint with PVC waterstop - Horizontal section

Field	Underground waterproofing
Type of work	Reinforced concrete
Boundary conditions	Aquifer
Construction	New
Excavation type	Confined
Type of material(s)	HYDRO-REACTIVE SYSTEM
Sequence of installation	Before pouring concrete
Level of risk	High
Type of protection	Waterproofing barrier



1. Well compacted soil without voids
3. AMPHIBIA 3000 GRIP
5. PVC waterstop
7. AKTI-VO 201

2. Rigid insulation panel or non-woven textile (min 250 g/m²)
4. WT PANEL (multiples)
6. Separating element
8. RC structure suitable to withstand hydraulic pressures and exempt from defects



PLEASE NOTE: Do not make Amphibia overlaps around the construction joint areas.

PLEASE NOTE: The waterproofing systems must be installed continuously all along the whole structure subjected to intervention and up till the ground level, keeping the continuity between all waterproofed surfaces, horizontal and vertical; any kind of joint, penetration and every possible crack must be sealed with suitable VOLTECO systems, applied in continuity with one another (see VOLTECO technical data sheets), in order to avoid any chance of seepage.

The structures must be suitable to withstand hydraulic pressures and every kind of load that they will undergo.

This proposed scheme (out of scale and released only for example purposes) and its implementation must be assessed and approved by the Designer and the Construction Supervisor in relation to the specific issues of the project and the building site. More information about the application, performances and technical data of the technologies that we have here described must be obtained from the product datasheets (also freely downloadable from the website www.volteco.it); those datasheets are considered part of this document.