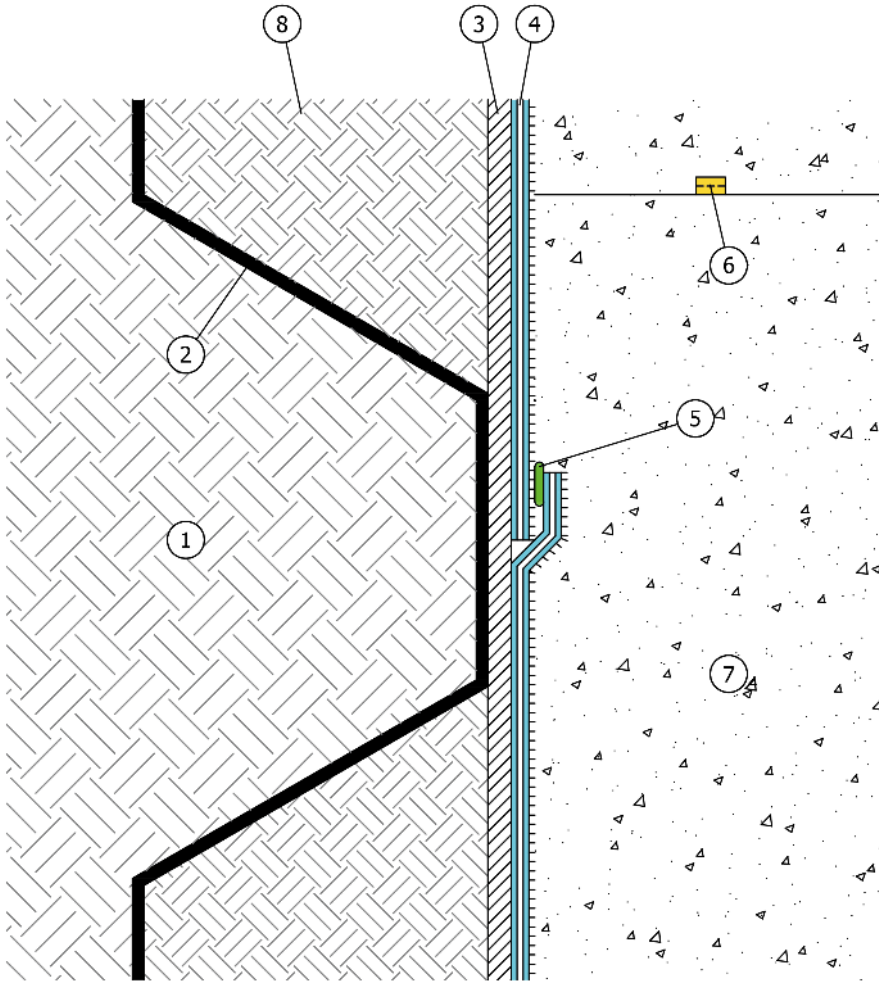


## Recoverable metal sheet piles with AMPHIBIA - Plan view - Horizontal section

<b>Field</b>	Underground waterproofing
<b>Type of work</b>	Reinforced concrete
<b>Boundary conditions</b>	Aquifer
<b>Construction</b>	New
<b>Excavation type</b>	Free
<b>Type of material(s)</b>	HYDRO-REACTIVE SYSTEM
<b>Sequence of installation</b>	Before pouring concrete
<b>Level of risk</b>	High
<b>Type of protection</b>	Waterproofing barrier



1. Soil
2. Recoverable metal sheet piles
3. Non-degradable rigid panel
4. AMPHIBIA 3000 GRIP
5. Overlap fixed with BI MASTIC
6. WT
7. RC structure suitable to withstand hydraulic pressures and exempt from defects
8. Well compacted soil without voids



PLEASE NOTE: Do not make Amphibia overlaps around the construction joint areas.

PLEASE NOTE: The waterproofing systems must be installed continuously all along the whole structure subjected to intervention and up till the ground level, keeping the continuity between all waterproofed surfaces, horizontal and vertical; any kind of joint, penetration and every possible crack must be sealed with suitable VOLTECO systems, applied in continuity with one another (see VOLTECO technical data sheets), in order to avoid any chance of seepage.

The structures must be suitable to withstand hydraulic pressures and every kind of load that they will undergo.

This proposed scheme (out of scale and released only for example purposes) and its implementation must be assessed and approved by the Designer and the Construction Supervisor in relation to the specific issues of the project and the building site. More information about the application, performances and technical data of the technologies that we have here described must be obtained from the product datasheets (also freely downloadable from the website [www.volteco.it](http://www.volteco.it)); those datasheets are considered part of this document.