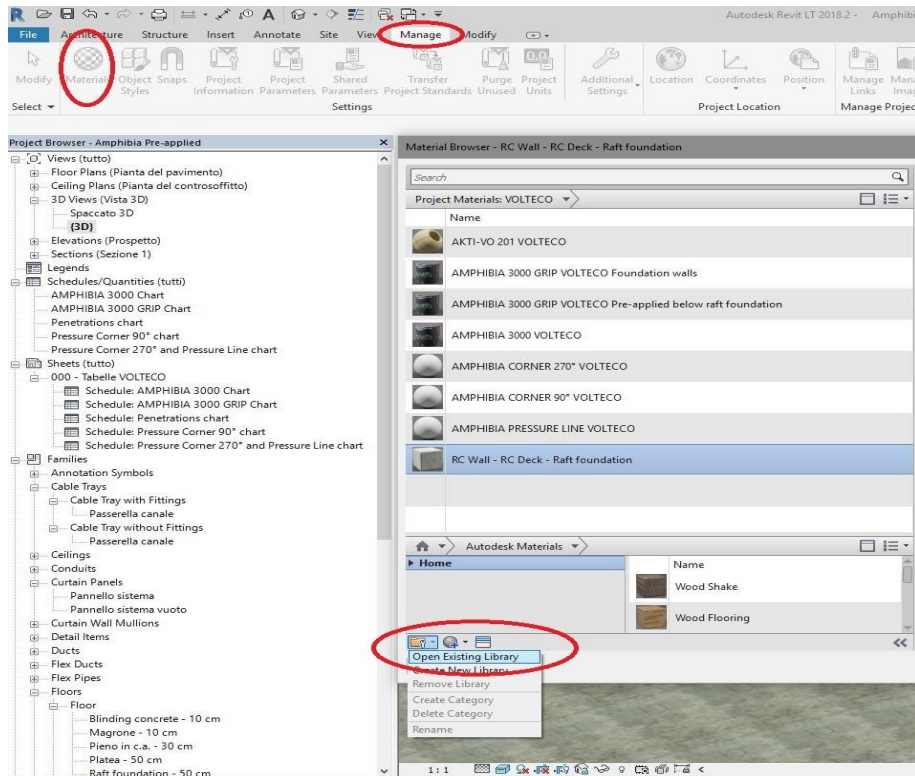


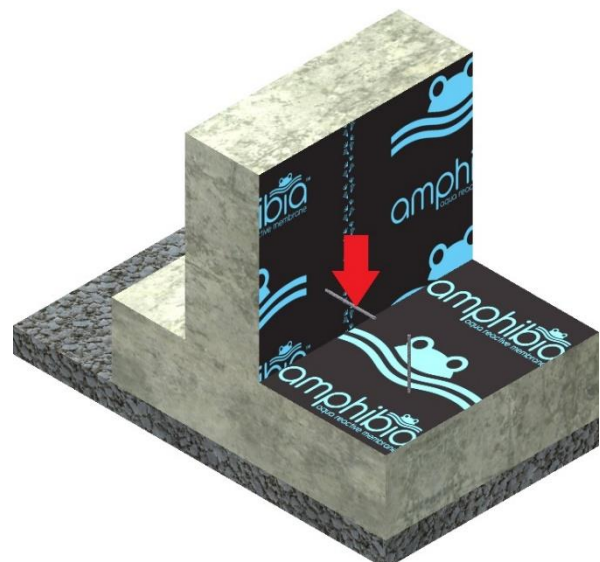
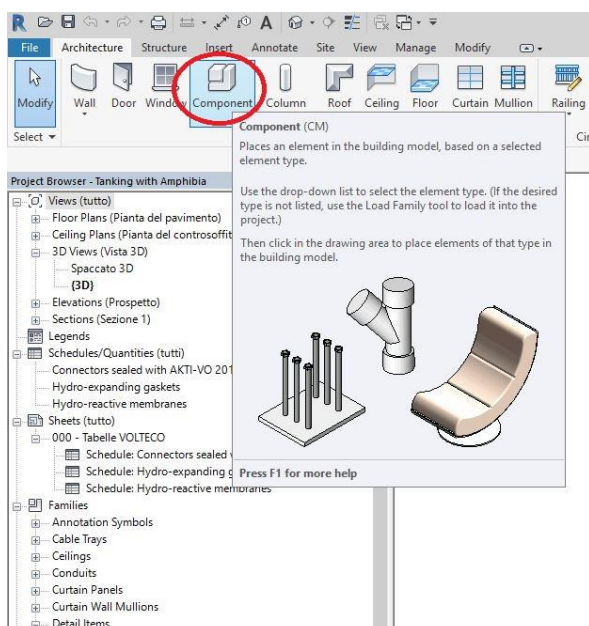
This proposed scheme (released only for example purposes) and its implementation must be assessed and approved by the Designer and the Construction Supervisor in relation to the specific issues of the project and the building site. More information about the application, performances and technical data of the technologies that we have here described must be obtained from the product datasheets (also freely downloadable from the website www.volteco.com); those datasheets are considered part of this document.

Operating instructions:

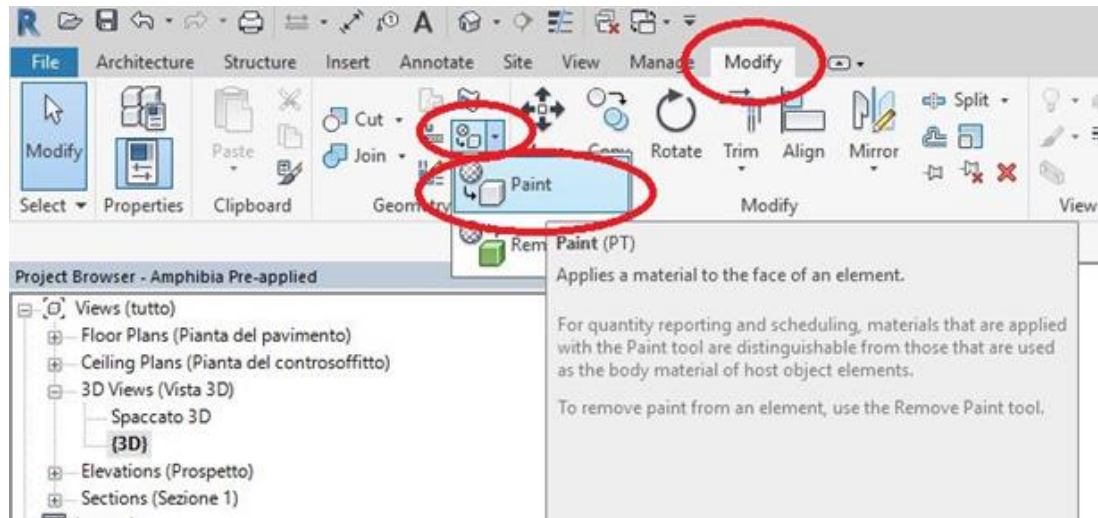
1. Load the material library called "Volteco Technologies" (format .adsklib)



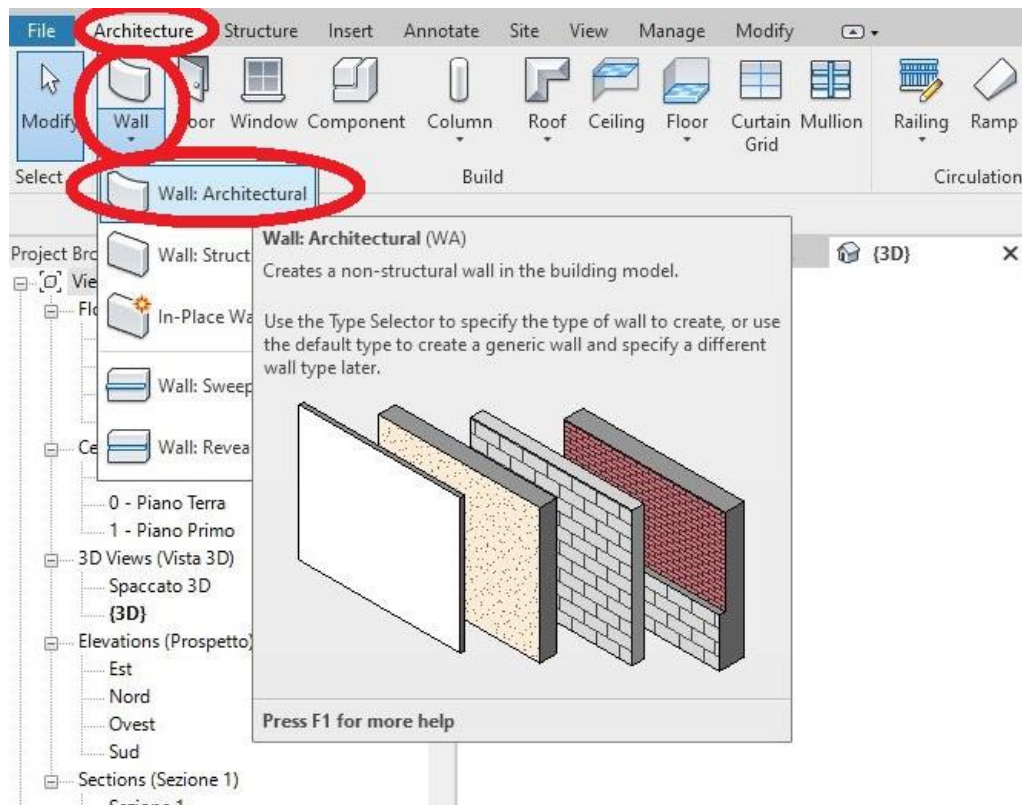
2. **REBARS ON VERTICAL WALL**, sealed with AKTI-VO 201, must be installed on the vertical wall; For a proper functional response of the panel commands, use the button "COMPONENT", and select the walls on which you want to paste the component after choosing it correctly from the REVIT device. In the end, in the abacus, "rebars sealed with attivo 201", to simplify the automatic calculation, manually insert the number of rebars provided in the vertical wall in the column "number of rebars per square meter".



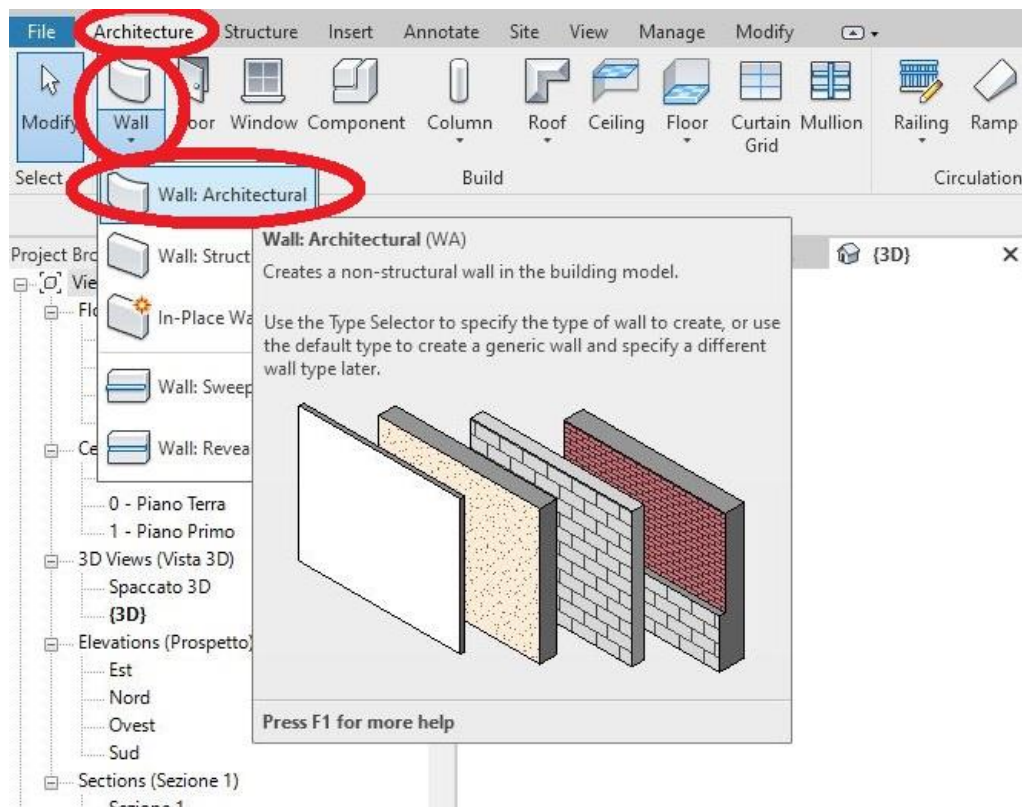
3. **PLASTIVO 250** must be installed In vertical and horizontal surfaces. For a proper use of the tool, it is necessary to use the button "PAINT" from REVIT device and correctly select the model's faces to apply the material.



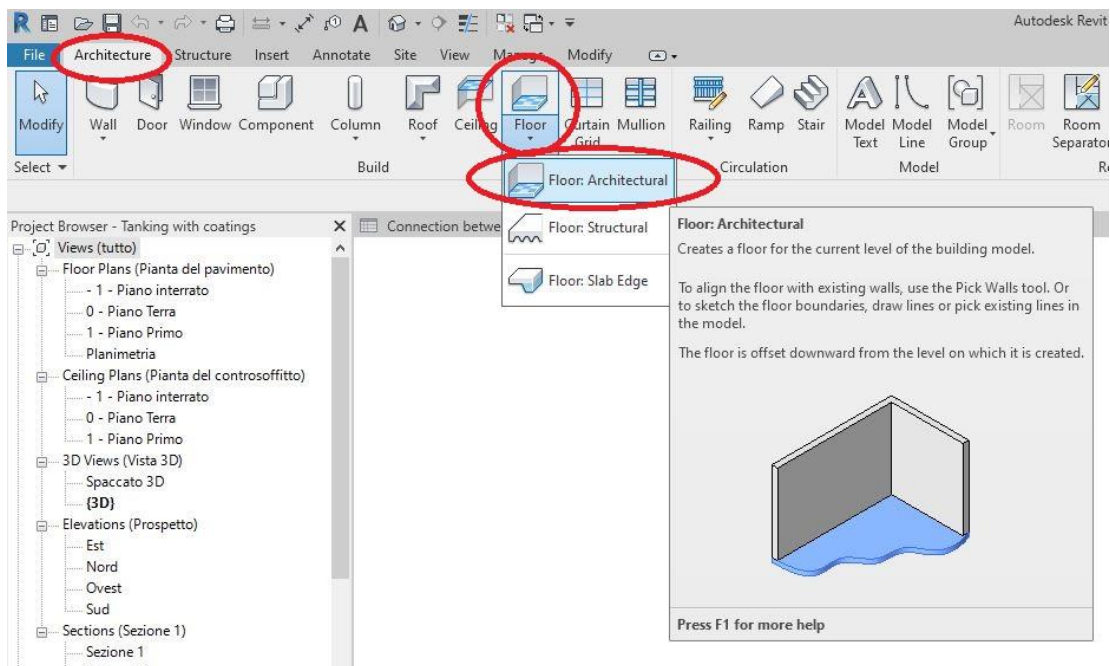
4. **BI MORTAR PLASTER SEAL** must be installed vertically all along the structure (2 layers); for its positioning use the "WALL" command.



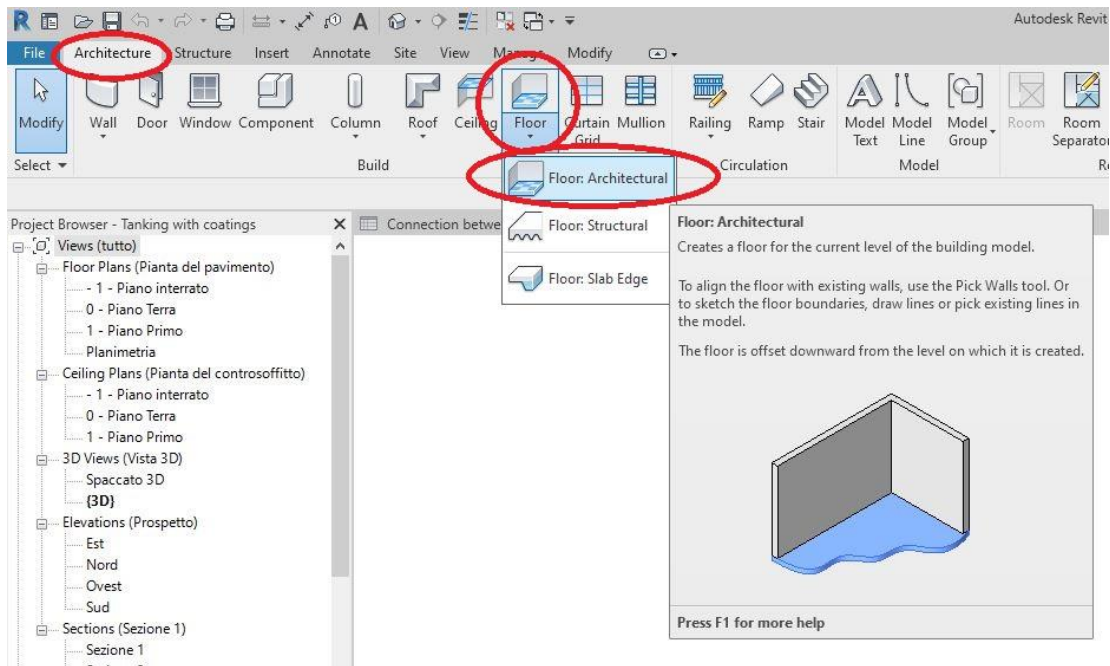
5. **RETE REVOMAT with BI MORTAR PS** must be installed vertically between the two layers of BI MORTAR PLASTER SEAL; for its positioning use the "WALL" command.



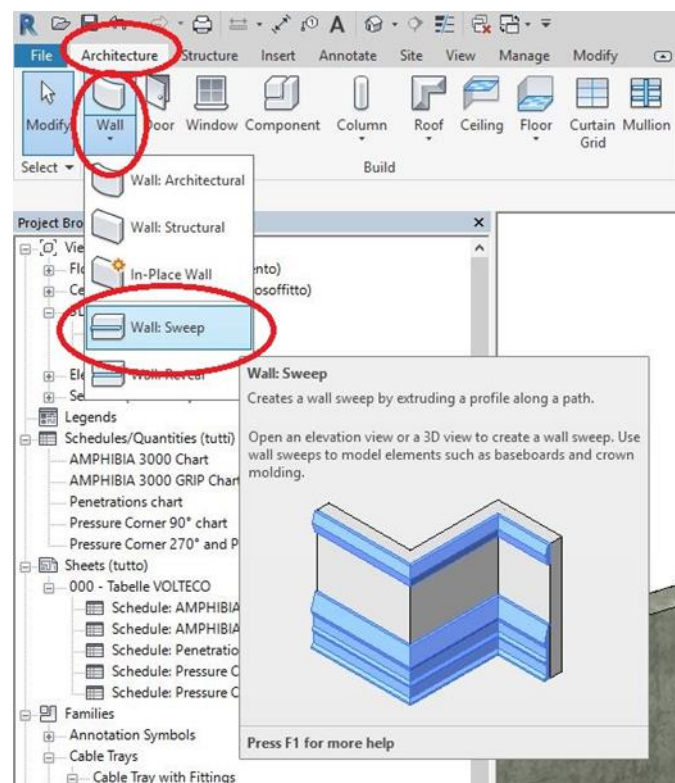
6. **BI MORTAR LEVELLING SEAL** must be installed horizontally on the RC raft foundation (two layers); insert by using the "FLOOR" command.



7. **METAL MESH with BI MORTAR SL** must be installed horizontally between the two layers of BI MORTAR SL; for its positioning use the "FLOOR" command.



8. **Sistema BI FLEX H.10** must be installed all along the internal corner between BI MORTAR PS and BI MORTAR SL; use the "WALL: SWEEP" command then select the walls on which to apply the element. Insert the value 0.1196 m (from the family "Volteco_Sistema BI FLEX H.10") in the Schedules/Quantities "Connection between horizontal and vertical surface with BI FLEX" in the column "Plastivo width" then multiply the "Length" by 0.6 kg/m (BI BOND yield – see TDS) in the column "Quantity tot. BI BOND kg"



PLEASE NOTE: The waterproofing systems must be installed continuously all along the whole structure subjected to intervention and up till the ground level, keeping the continuity between all waterproofed surfaces, horizontal and vertical; any kind of joint, penetration and every possible crack must be sealed with suitable VOLTECO systems, applied in continuity with one another (see VOLTECO technical data sheets), in order to avoid any chance of seepage. The structures must be suitable to withstand hydraulic pressures and every kind of load that they will undergo.