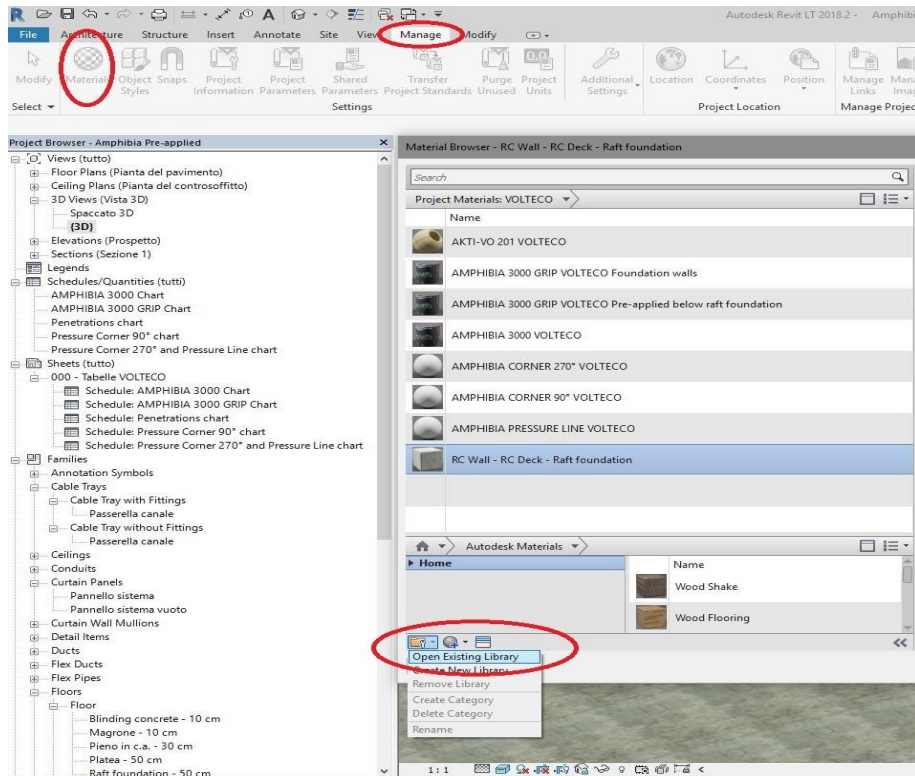


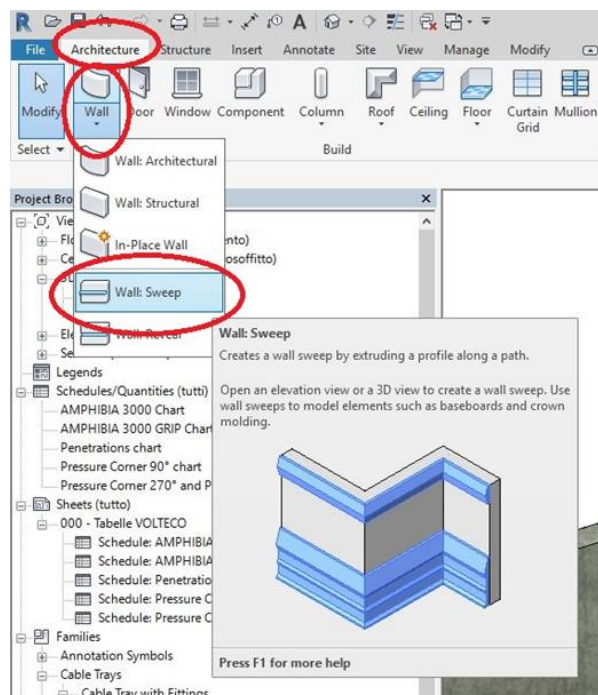
This proposed scheme (released only for example purposes) and its implementation must be assessed and approved by the Designer and the Construction Supervisor in relation to the specific issues of the project and the building site. More information about the application, performances and technical data of the technologies that we have here described must be obtained from the product datasheets (also freely downloadable from the website www.volteco.com); those datasheets are considered part of this document.

Operating instructions:

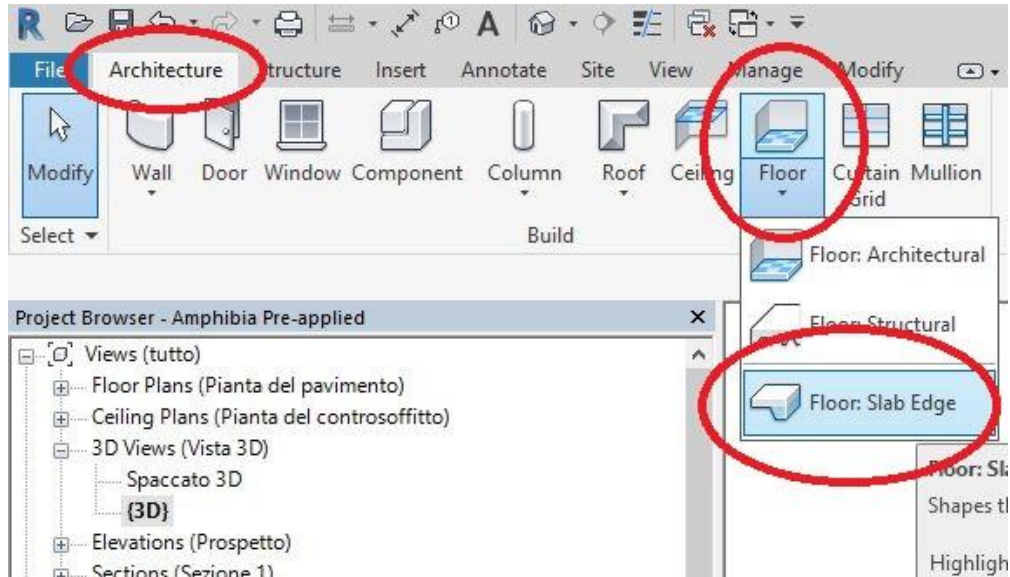
1. Load the material library called "Volteco Technologies" (format .adsklib)



2. **AQUASCUD JOIN** must be installed at the bottom of the wall all along the corner in connection with the slab; use the "WALL: SWEEP" command and pick on the walls to apply the element.



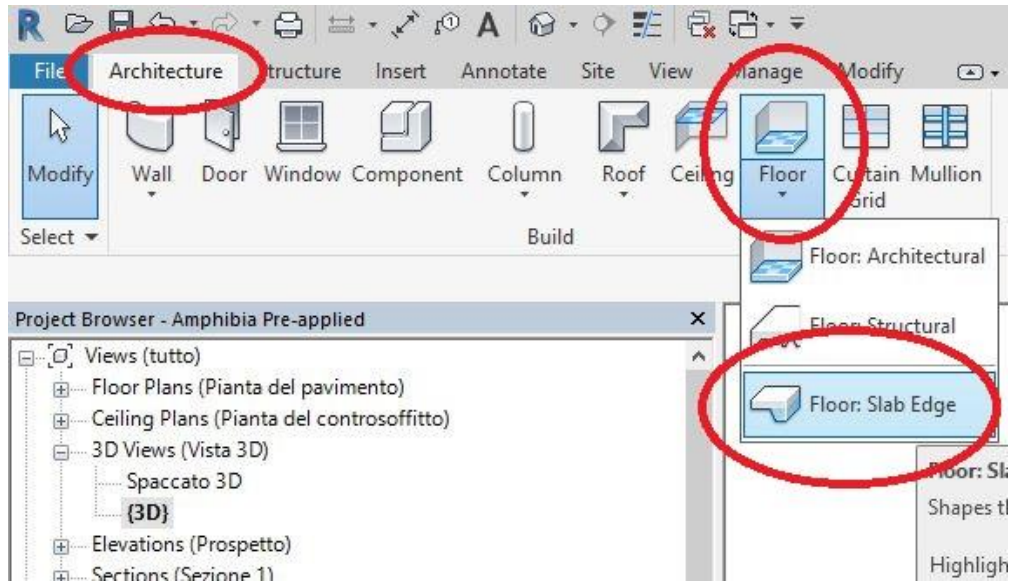
3. **AQUASCUD JOIN BT** must be installed all along the edges of the marble threshold. Use the "FLOOR – SLAB EDGE" and pick on the edge to apply the element.
Type "3%" in the field "% swarf" in the "Draining gutter profile and joint covers" abacus.



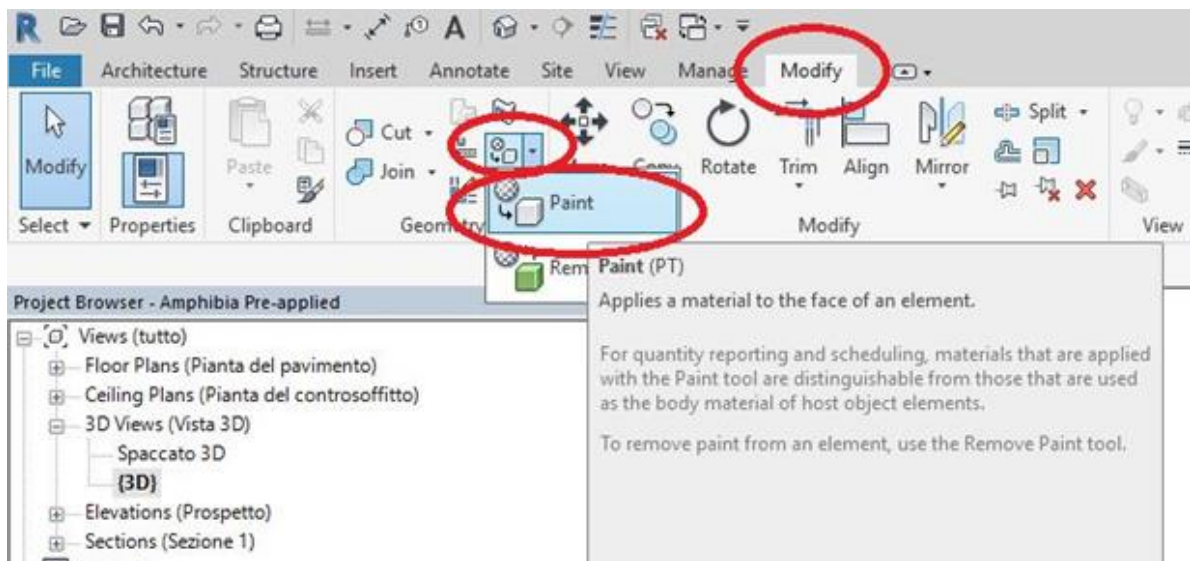
4. **GARVO 3 e 5** must be installed on the fractionation and/or structural joints. Use the "FLOOR – SLAB EDGE" and pick on the edge to apply the element.
Type "3%" in the field "% swarf" in the "Draining gutter profile and joint covers" abacus.



5. **AQUASCUD H.10 LINE** must be installed all along the edges of the terrace. Use the "FLOOR – SLAB EDGE" and pick on the edge to apply the element.
Type "3%" in the field "% swarf" in the "Draining gutter profile and joint covers" abacus.



6. **AQUASCUD 420** must be installed on the horizontal surface of the concrete screed; use the "PAINT" command and pick properly the surfaces to apply the material.



PLEASE NOTE: The waterproofing systems must be installed continuously all along the whole structure subjected to intervention and up till the ground level, keeping the continuity between all waterproofed surfaces, horizontal and vertical; any kind of joint, penetration and every possible crack must be sealed with suitable VOLTECO systems, applied in continuity with one another (see VOLTECO technical data sheets), in order to avoid any chance of seepage. The structures must be suitable to withstand hydraulic pressures and every kind of load that they will undergo.