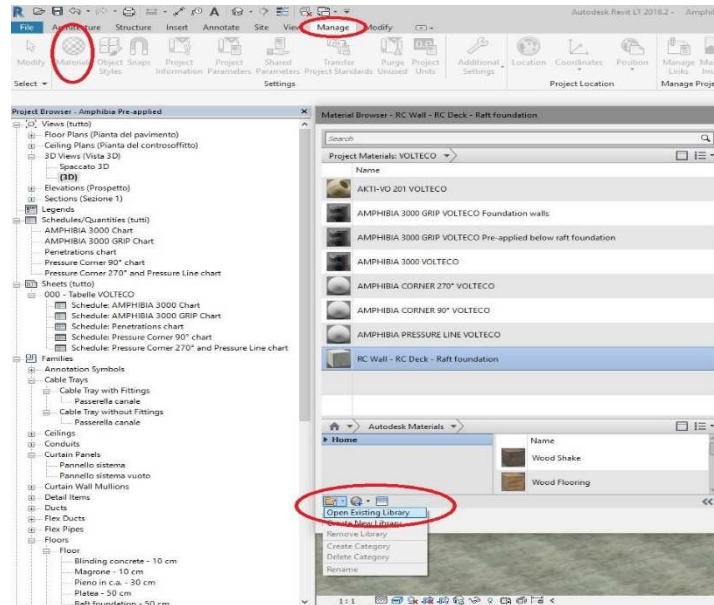


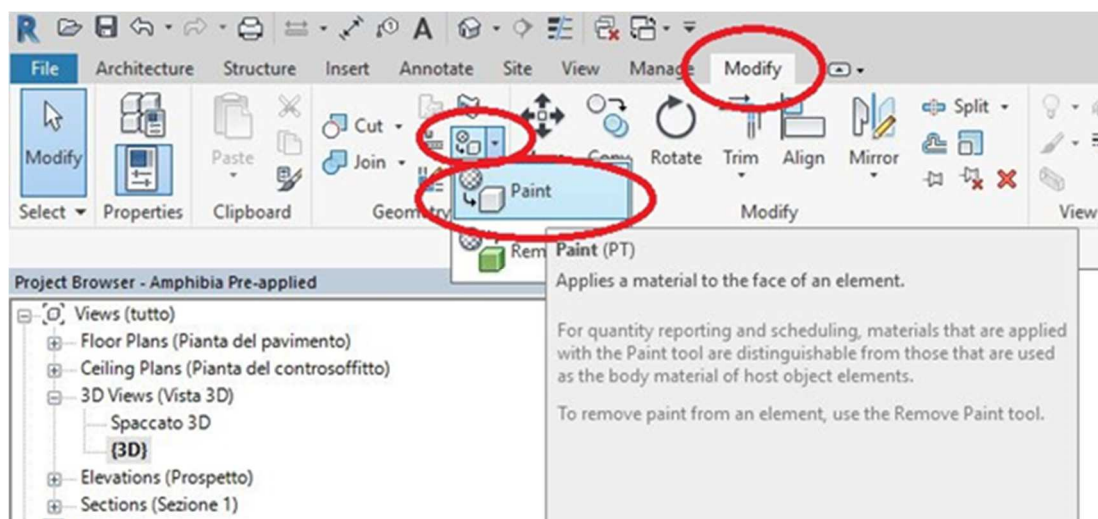
This proposed scheme (released only for example purposes) and its implementation must be assessed and approved by the Designer and the Construction Supervisor in relation to the specific issues of the project and the building site. More information about the application, performances and technical data of the technologies that we have here described must be obtained from the product datasheets (also freely downloadable from the website www.volteco.com); those datasheets are considered part of this document.

Operating instructions:

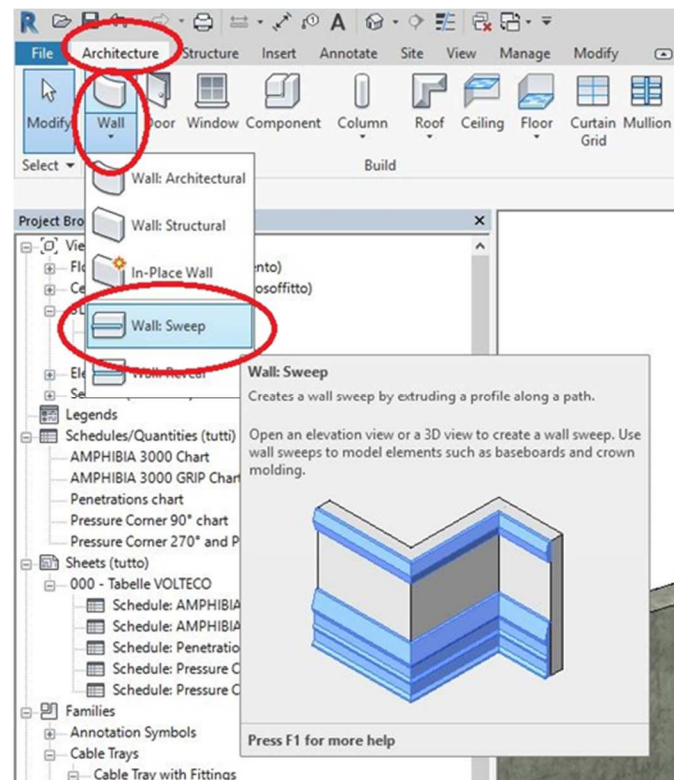
1. **Load the material library** called "Volteco Technologies" (format .adsklib)



2. **PLASTIVO 250** must be installed In vertical and horizontal surfaces. For a proper use of the tool, it is necessary to use the button "PAINT" from REVIT device and correctly select the model's faces to apply the material.



3. **BI FLEX SYSTEM H.20** Sealing raft foundation joint with BI FLEX SYSTEM; use the "FLOOR: SLAB EDGE" command then select the floor on which to apply the element.



PLEASE NOTE: The waterproofing systems must be installed continuously all along the whole structure subjected to intervention and up till the ground level, keeping the continuity between all waterproofed surfaces, horizontal and vertical; any kind of joint, penetration and every possible crack must be sealed with suitable VOLTECO systems, applied in continuity with one another (see VOLTECO technical data sheets), in order to avoid any chance of seepage. The structures must be suitable to withstand hydraulic pressures and every kind of load that they will undergo.