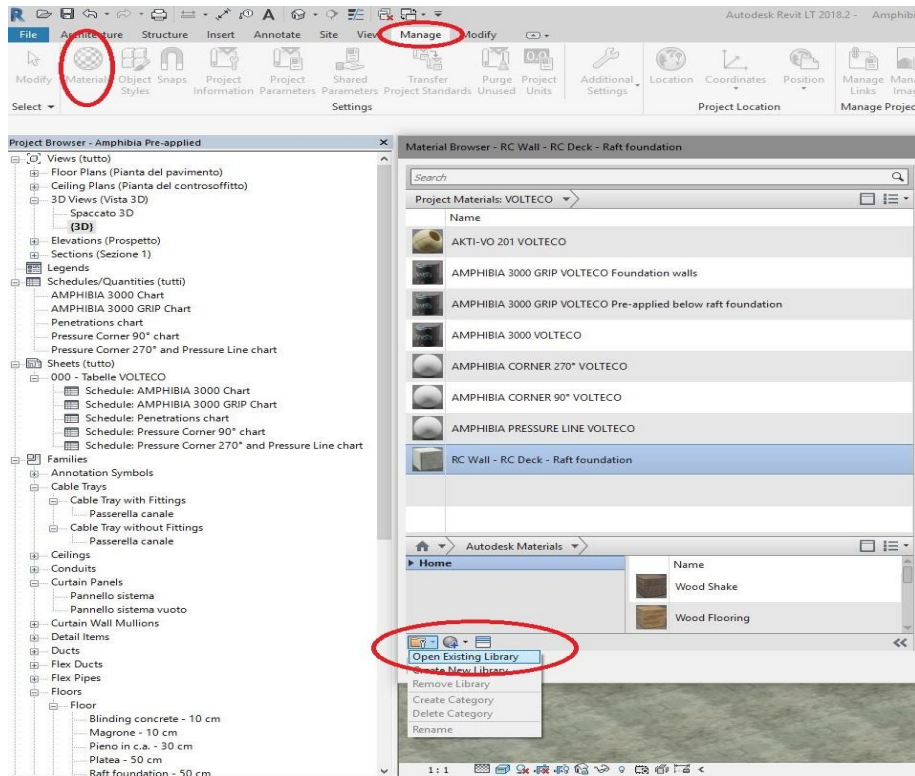


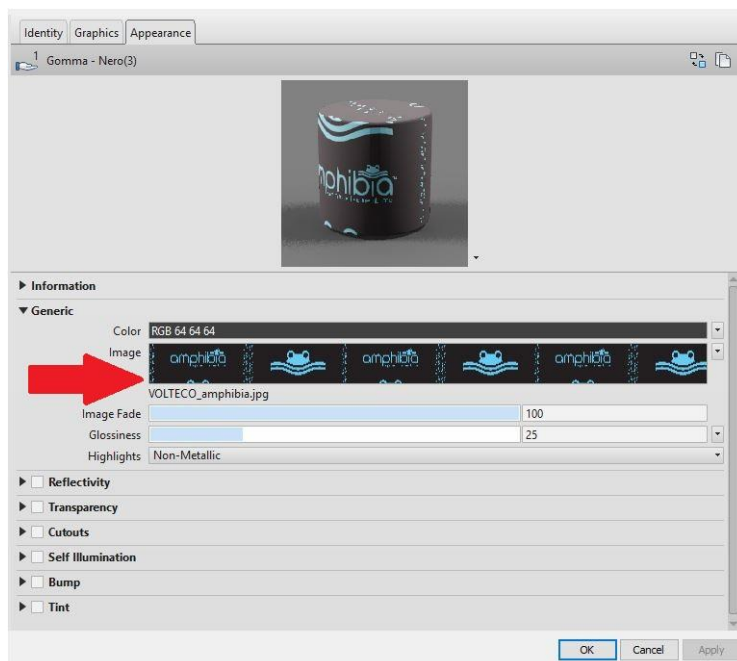
This proposed scheme (released only for example purposes) and its implementation must be assessed and approved by the Designer and the Construction Supervisor in relation to the specific issues of the project and the building site. More information about the application, performances and technical data of the technologies that we have here described must be obtained from the product datasheets (also freely downloadable from the website [www.volteco.com](http://www.volteco.com)); those datasheets are considered part of this document.

Operating instructions:

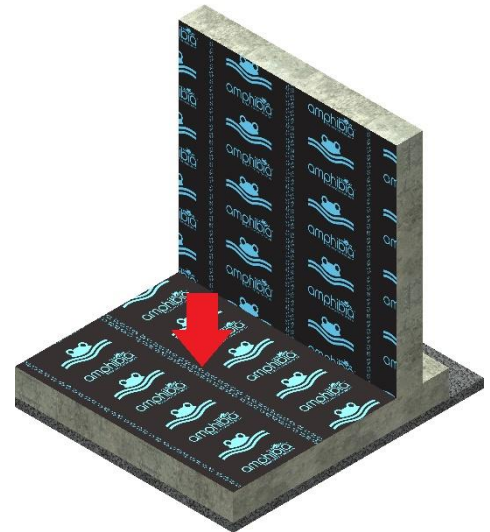
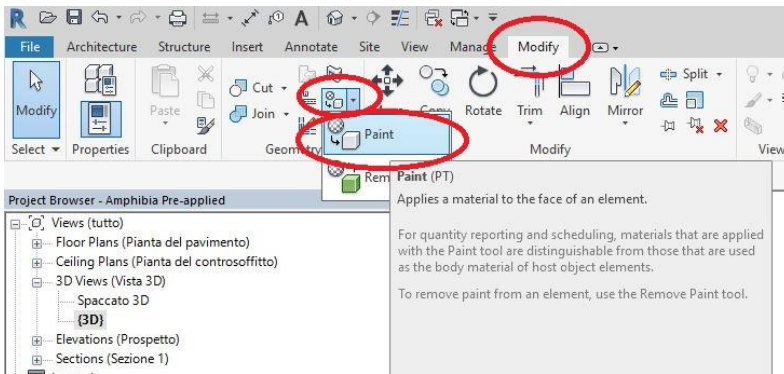
## 1. Load the material library called "Volteco Technologies" (format .adsklib)



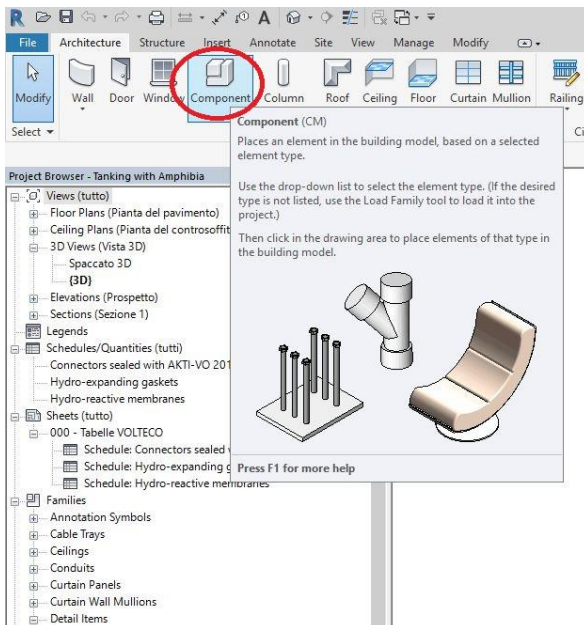
## 2. Load "VOLTECO amphibia" texture to define the appearance of Amphibia 3000 and Amphibia 3000 Grip technologies.



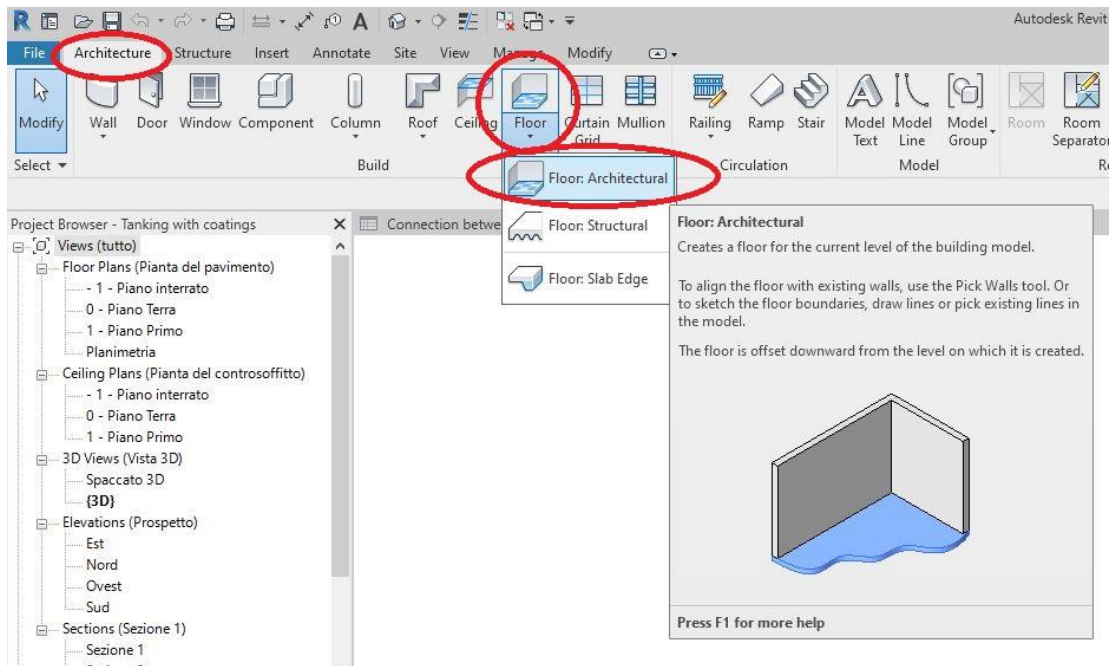
3. **AMPHIBIA 3000 GRIP** has to be installed below the horizontal existing structure before the new raft foundation. For a proper use of the tool, use the button "PAINT", and select the walls on which you want to paste the component after choosing it correctly from the REVIT device.



4. **CONNETTORE 38, AKTI-VO 201 and BI FIX**, the CONNETTORE 38 must be installed on the RC surface; For a proper functional response of the panel commands, use the button "COMPONENT", and select the position on which you want to paste the component after choosing it correctly from the REVIT device. In the end, in the abacus, "CONNETTORE 38 and BI FIX", to simplify the automatic calculation, manually insert the number of connectors in the column "N° connectors tot".



5. **FIBRO HFR** must be installed horizontally on the RC surface; insert by using the “FLOOR” and “WALL” command.



**PLEASE NOTE:** The waterproofing systems must be installed continuously all along the whole structure subjected to intervention and up till the ground level, keeping the continuity between all waterproofed surfaces, horizontal and vertical; any kind of joint, penetration and every possible crack must be sealed with suitable VOLTECO systems, applied in continuity with one another (see VOLTECO technical data sheets), in order to avoid any chance of seepage. The structures must be suitable to withstand hydraulic pressures and every kind of load that they will undergo.