

VOLGRP EP: Anchor trench detail

Field	Underground waterproofing
Type of work	Reinforced concrete
Boundary conditions	Aquifer
Construction	New
Excavation type	Free
Type of material(s)	HYDRO-REACTIVE SYSTEM
Sequence of installation	Before pouring concrete
Level of risk	High
Type of protection	Waterproofing barrier



1. VOLGRIP EP

3. Possible soil retaining geogrid

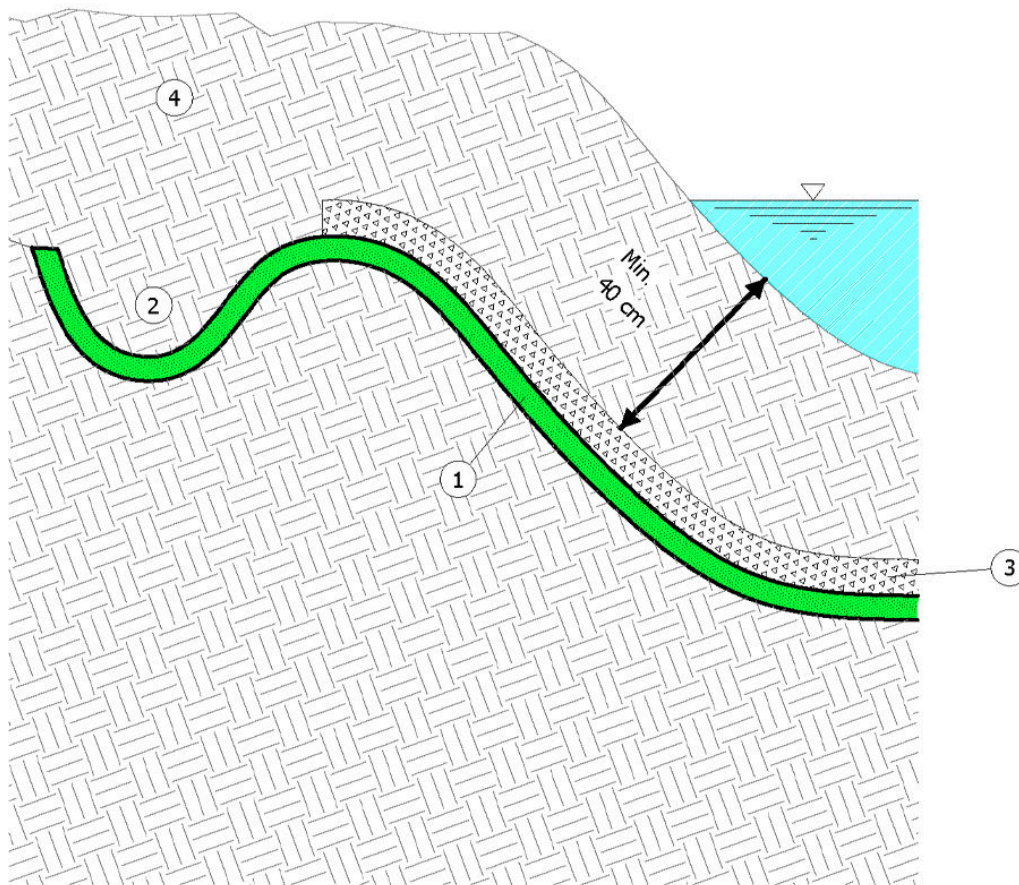
N.B.: BENTONITE DI SODIO GRANULARE must be evenly applied all along the overlaps (20 cm)

N.B.: The soil covering must consist of well-graded soil, sand or crushed gravel (avoid sharp stones or stones with a diameter of more than 2.5 cm)

2. Possible anchor trench (size and depth must be assessed in relation to slope inclination)

4. Well compacted soil with a minimum thickness of 40 cm

N.B.: In the case of a well-compacted bottom, the sheets must be fastened by using steel connectors



PLEASE NOTE: The waterproofing systems must be installed continuously all along the whole structure subjected to intervention, keeping the continuity between all waterproofed surfaces, horizontal and vertical; any kind of joint (e.g. dilatation joints on the screeds, structural joints etc.), penetration, corner and every possible crack must be sealed with suitable VOLTECO systems, applied in continuity with one another (see VOLTECO technical data sheets), in order to avoid any chance of seepage. The structures must be cast in-place and suitable to withstand every kind of load that they will undergo.

This proposed scheme (out of scale and released only for example purposes) and its implementation must be assessed and approved by the Designer and the Construction Supervisor in relation to the specific issues of the project and the building site. More information about the application, performances and technical data of the technologies that we have here described must be obtained from the product datasheets (also freely downloadable from the website www.volteco.it); those datasheets are considered part of this document.