



REVOGRID CONNECTOR-L

PRODUCT DESCRIPTION

REVOGRID CONNECTOR-L is a preformed, L-shaped, improved adhesion connector made from GFRP (Glass Fibre Reinforced Polymer), suitable for connecting GFRP meshes within structural reinforcement systems using the CRM (Composite Reinforced Mortar) technique - Ref. ETA 25/0119. Its versatility and high mechanical performance make the REVOGRID CONNECTOR-L also suitable for other types of connections, according to specific design requirements.

In combination with REVOGRID and REVOGRID CORNER, it guarantees a perfect connection to the wall substrate, ensuring uniform reinforcement.

This integrated system allows for a stronger, more ductile reinforced masonry capable of withstanding intense stresses, making it particularly suitable for seismic improvement and structural rehabilitation.



PRODUCT APPLICATION

- Construction of CRM (Composite Reinforced Mortar) system in combination with mesh, angle brackets and structural plaster mortar
- Connections to the mortar or concrete casting substrate

ADVANTAGES

- High mechanical strength: ensures long-lasting, high-performance reinforcement
- Lightweight and easy to install: simplifies installation and reduces work times
- Compatibility with traditional materials: excellent adhesion with common mortar and masonry
- Chemical resistance: resistant to weathering and aggressive environments
- Electrical and magnetic isolation: prevents electromagnetic interference

PREPARATION AND APPLICATION The preparation and installation data refer to normal environmental conditions (temperature +20 °C; relative humidity 60%).

Preparing the surfaces

Before applying REVOGRID CONNECTOR-L, remove any surface roughness in the vicinity of the connector fixing point and carefully prepare the substrate by removing dust and loose materials

Application

On the laying surface, mark the position of the anchor points according to the spacing and design specifications.

Next, drill the housing holes using a drill bit with a minimum diameter of 8 mm.

Once the holes have been drilled, proceed with thorough cleaning of them using a blower to remove any residue and ensure that the inner surface of the hole is completely free of impurities.

This operation is essential to ensure effective anchoring of the connector.

After cleaning, extrude BI FIX 300 chemical anchor (see relevant data sheet) from the bottom of the hole, filling it completely.

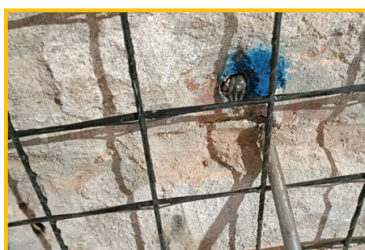
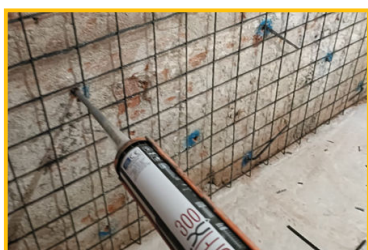


REVOGRID CONNECTOR-L



Then insert the REVOGRID CONNECTOR-L connector into the hole, turning it slightly on itself until it reaches the base.

During insertion, check that there is an even release of excess resin, a sign that the cavity is properly filled and that the connector is fully bonded to the surface.



References available at www.volteco.com

PACKAGING AND STORAGE

REVOGRID CONNECTOR-L is supplied in boxes of 100 pieces.

Each connector is 6 mm in diameter and L-shaped, with the short side being 100 mm and the long side 200 mm.

WARNINGS - IMPORTANT NOTES

Do not remove the connector in the seat during the setting of the chemical anchoring.

Respect the temperatures required by the chemical anchor to proceed with the fixing of the connectors.

PHYSICAL AND TECHNICAL SPECIFICATIONS

Feature	Values	Standard
Colour	Black	-
Weight	54 g/m	-
Nominal section	28,26 mm ²	CNR-DT 203/2006
Nominal diameter	6 mm	CNR-DT 203/2006
Fibre type	Continuous filament glass fibre	-
Type of sizing	Epoxy resin	-
Short side dimension (A) See attached image	100 mm	-
Long side dimension (B) See attached image	200 mm	-
Tensile breaking strength mean value	26,1 KN	EAD 340392-00-0104
Yield stress mean value	926 MPa	EAD 340392-00-0104
Yield stress characteristic value	828 Mpa	EAD 340392-00-0104
Elastic modulus mean value	44,9 Gpa	EAD 340392-00-0104
Elastic modulus characteristic value	42,8 GPa	EAD 340392-00-0104
Strain at failure, characteristic value	1,93%	EAD 340392-00-0104
Overlap length	11 cm	EAD 340392-00-0104
Crisis load of the overlap joint mean value	25,5 KN	EAD 340392-00-0104
Yield stress of the overlapped joint mean value	903 MPa	EAD 340392-00-0104
Mean extraction force on concrete substrate (*)	16,6 KN	EAD 340392-00-0104
Mean extraction force on brick substrate (*)	6,1 KN	EAD 340392-00-0104
Mean extraction force on stone substrate (*)	10,5 KN	EAD 340392-00-0104
Mean extraction force on tuff substrate (*)	5,3 KN	EAD 340392-00-0104

The quoted data are obtained in a laboratory at +20 °C and 60% RH.

(*) Anchor length 12 cm

Product conforming to the provisions of the "Guideline for the identification, qualification and acceptance control of preformed mesh systems made of fibre-reinforced polymer matrix composite materials to be used for the structural consolidation of existing buildings using the CRM (Composite Reinforced Mortar) technique" referred to in Article 1 of the Decree of the President of the Superior Council of Public Works no. 292 of 29/05/2019.

REVOGRID CONNECTOR-L is a component of REVOGRID SYSTEM, a CRM (Composite Reinforced



REVOGRID CONNECTOR-L

Mortar) system certified to ETA 25/0119 and complying with the requirements of EAD 340392-00-0104.

SAFETY

Refer to the related Safety Data Sheet.

COPYRIGHT

© Copyright Volteco S.p.A. - All rights reserved.
Information, images and text found in this document are exclusive property of Volteco S.p.A.
They may change anytime without prior notice.
Updated versions of this and other documentation (specification, brochure, other) are on www.volteco.com.
In case of translation text may contain technical and linguistic inaccuracies.

LEGAL NOTES

Note for buyer/installer:
This document prepared by Volteco S.p.A. is provided as an aid and guideline for the buyer/installer.
This does not take into consideration the details of each single operational context, for which Volteco S.p.A. will not be held liable.
This does not change and does not extend the obligations of Volteco S.p.A.
It may vary and the installer is therefore required to update his/her information prior to each application by referring to www.volteco.com.
The above clarifications extend to the pre-post-sales technical/commercial information of the commercial network.

ANNEXES

