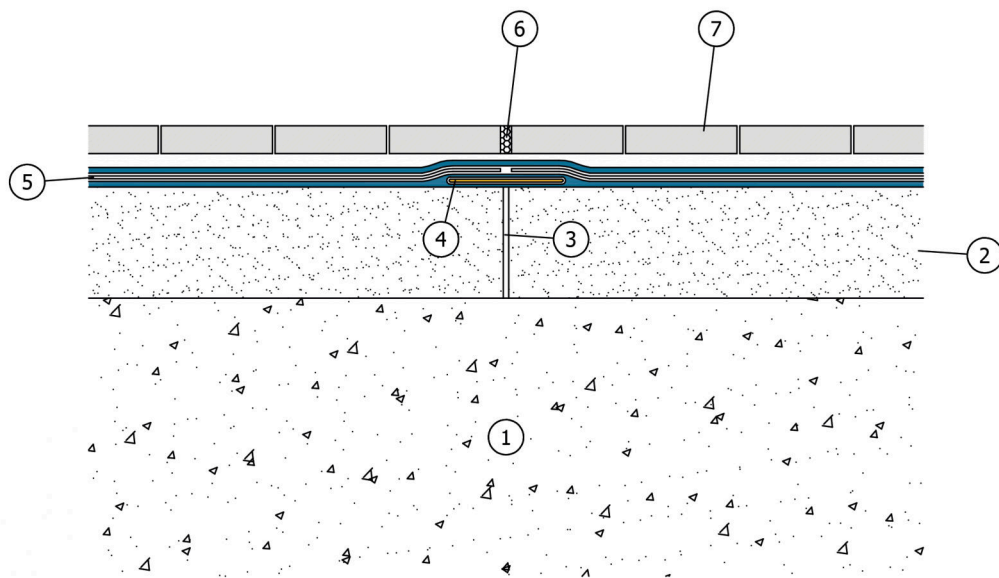


AQUASCUD SYSTEM - EXPANSION JOINT SEALING

Field	Roofing protection
Type of work	Reinforced concrete / Prefabricated structures
Boundary conditions	Percolation water
Construction	New / Existing
Excavation type	-
Type of material(s)	AQUASCUD SYSTEM
Sequence of installation	-
Level of risk	High
Type of protection	Waterproofing barrier / Drainage

- | | |
|--|-----------------------------|
| 1. R.C. slab | 2. Sloped screed |
| 3. Expansion joint | 4. GARVO |
| 5. AQUASCUD SYSTEM | 6. Deformable sealing joint |
| 7. Ceramic floor tiles laid with C2-type adhesive (preferably with an S1 and S2 deformation class) | |



PLEASE NOTE: Dilatation joints must be realized on the screeds, having position and length according to the Designer's specifics, and sealed with GARVO. The waterproofing SYSTEMS must be installed continuously all along the whole structure subjected to intervention, keeping the continuity between all waterproofed surfaces, horizontal and vertical; any kind of joint (e.g. dilatation joints on the screeds, structural joints etc.), penetration, corner and every possible crack must be sealed with suitable VOLTECO SYSTEMS, applied in continuity with one another (see VOLTECO technical data sheets), in order to avoid any chance of seepage. The structures must be suitable to withstand every kind of load that they will undergo.

Dilatation joints must be realized on the screeds, having position and length according to the Designer's specifics, and sealed with GARVO

All structures have to be suitable to withstand all future loads

This proposed scheme (out of scale and released only for example purposes) and its implementation must be assessed and approved by the Designer and the Construction Supervisor in relation to the specific issues of the project and the building site. More information about the application, performances and technical data of the technologies that we have here described must be obtained from the product datasheets (also freely downloadable from the website www.volteco.it); those datasheets are considered part of this document.