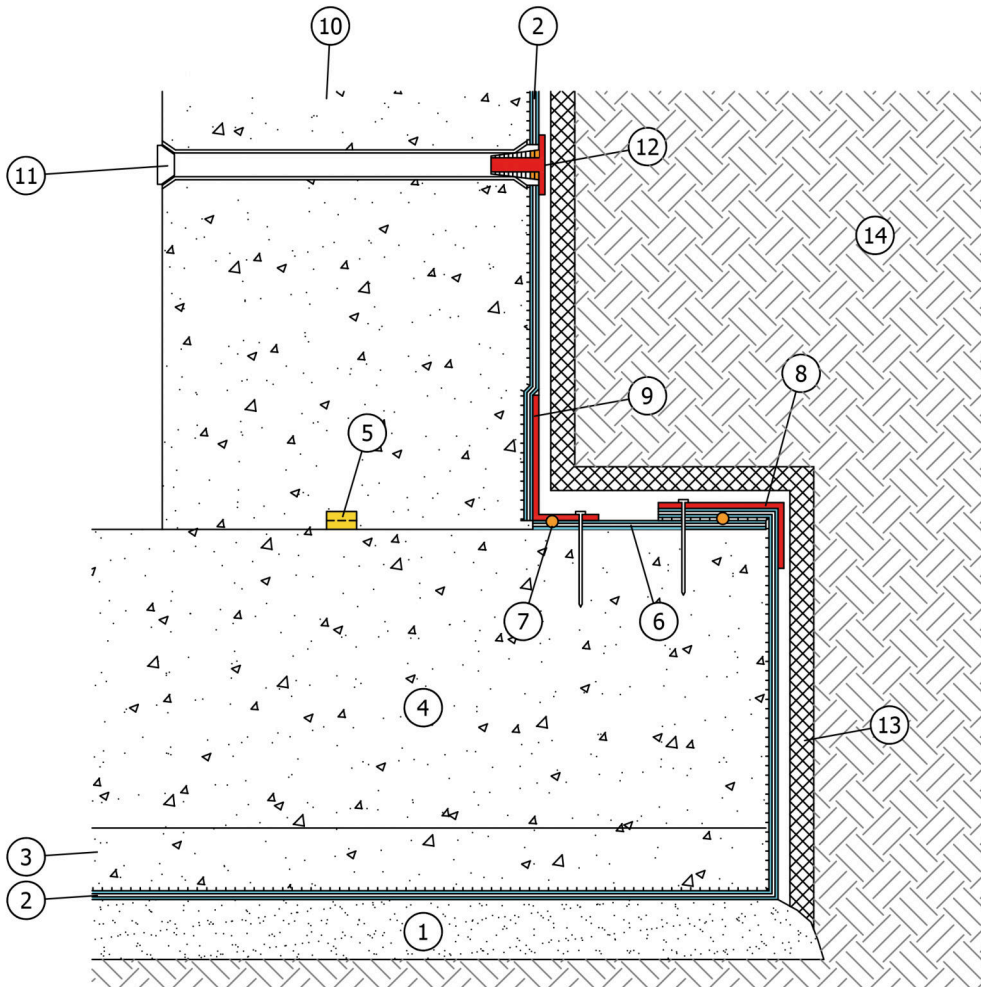


CONSTRUCTION JOINT WITH AMPHIBIA PRE-APPLIED AGAINST FORMWORKS

Field	Underground waterproofing
Type of work	Reinforced concrete
Boundary conditions	Aquifer
Construction	New
Excavation type	Free
Type of material(s)	HYDRO-REACTIVE SYSTEM
Sequence of installation	Before pouring concrete
Level of risk	High
Type of protection	Waterproofing barrier

1. Lean concrete
2. AMPHIBIA 3000 GRIP
3. Concrete protective screed (optional)
4. RC raft foundation suitable to withstand hydraulic pressures and exempt from defects
5. WT
6. AMPHIBIA 3000 GRIP after casting concrete
7. BI MASTIC or AKTI-VO 201
8. AMPHIBIA PRESSURE CORNER 90°
9. AMPHIBIA PRESSURE CORNER 270°
10. RC wall suitable to withstand hydraulic pressures and exempt from defects
11. PVC distance tube to seal
12. AMPHIBIA STOPPER with AKTI-VO 201 to seal the spacer tube
13. Rigid insulation panel or non-woven textile (min 250 g/m²)
14. Well compacted soil without voids



PLEASE NOTE: Do not make Amphibia overlaps around the construction joint areas.

PLEASE NOTE: The waterproofing systems must be installed continuously all along the whole structure subjected to intervention and up till the ground level, keeping the continuity between all waterproofed surfaces, horizontal and vertical; any kind of joint, penetration and every possible crack must be sealed with suitable VOLTECO systems, applied in continuity with one another (see VOLTECO technical data sheets), in order to avoid any chance of seepage.

The structures must be suitable to withstand hydraulic pressures and every kind of load that they will undergo.