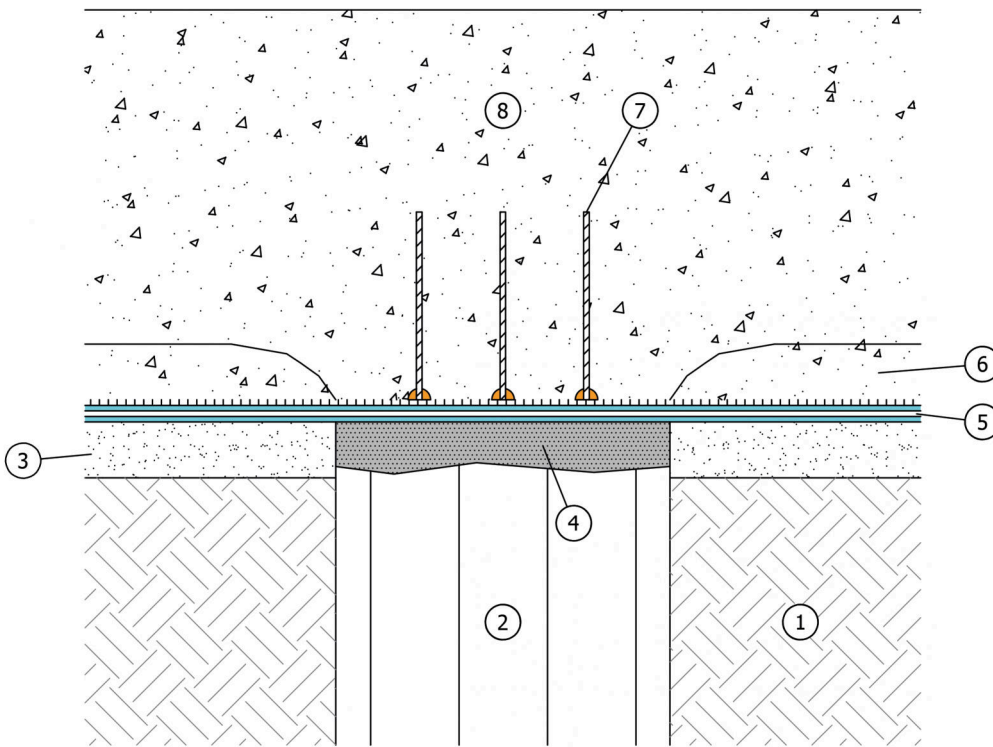


RAFT FOUNDATION WITH PILES - AMPHIBIA OVER PILE HEAD

Field	Underground waterproofing
Type of work	Reinforced concrete
Boundary conditions	Aquifer
Construction	New
Excavation type	Confined
Type of material(s)	HYDRO-REACTIVE SYSTEM
Sequence of installation	Before pouring concrete
Level of risk	High
Type of protection	Waterproofing barrier

1. Soil
2. Foundation pile
3. Lean concrete blinding
4. Reconstruction with BI MORTAR LEVelling SEAL or FIBRO HFR or in concrete
4. Concrete protective screed (optional)
5. AMPHIBIA 3000 GRIP over the pile head
6. Steel bars sealed with AKTI-VO 201 or WT 102
7. RC structure suitable to withstand hydraulic pressures and exempt from defects
8. RC structure suitable to withstand hydraulic pressures and exempt from defects



PLEASE NOTE: Do not make Amphibia overlaps around the construction joint areas.

PLEASE NOTE: The waterproofing systems must be installed continuously all along the whole structure subjected to intervention and up till the ground level, keeping the continuity between all waterproofed surfaces, horizontal and vertical; any kind of joint, penetration and every possible crack must be sealed with suitable VOLTECO systems, applied in continuity with one another (see VOLTECO technical data sheets), in order to avoid any chance of seepage.

The structures must be suitable to withstand hydraulic pressures and every kind of load that they will undergo.

This proposed scheme (out of scale and released only for example purposes) and its implementation must be assessed and approved by the Designer and the Construction Supervisor in relation to the specific issues of the project and the building site. More information about the application, performances and technical data of the technologies that we have here described must be obtained from the product datasheets (also freely downloadable from the website www.volteco.it); those datasheets are considered part of this document.