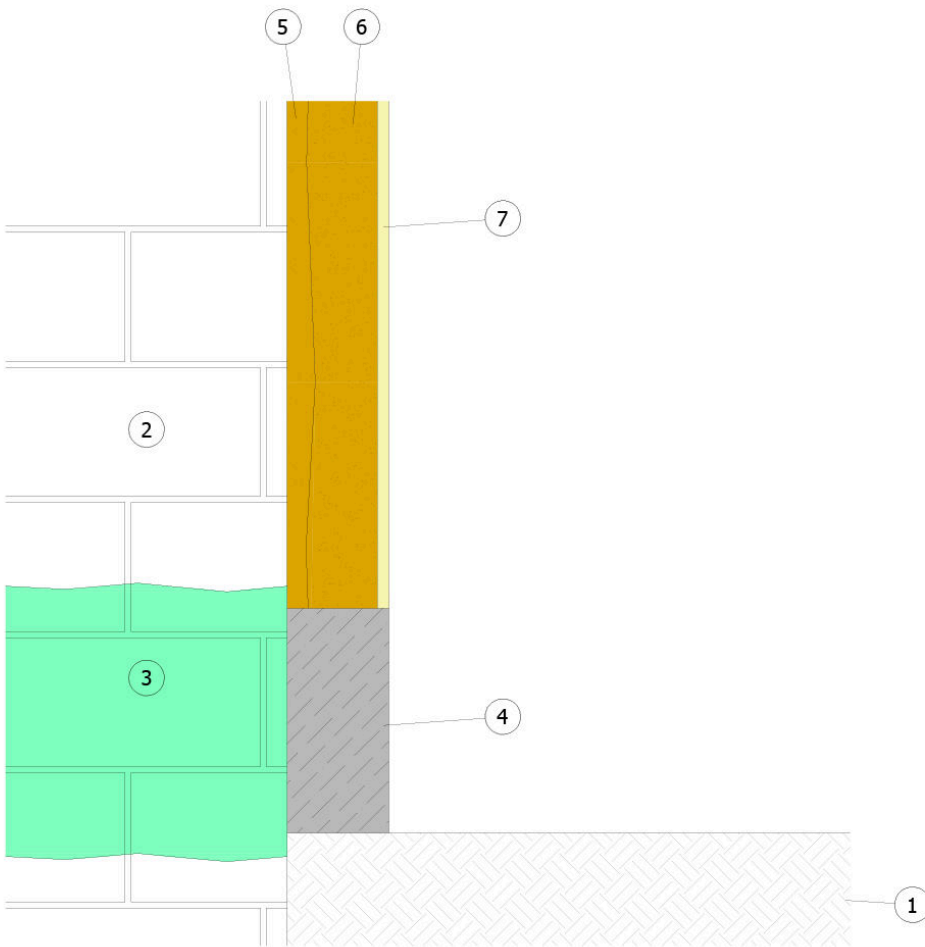


# RISING DAMPNESS

<b>Field</b>	Restoration of damp masonries
<b>Type of work</b>	Masonry / Mixed masonry
<b>Boundary conditions</b>	Presence of capillary rising
<b>Construction</b>	Existing
<b>Excavation type</b>	-
<b>Type of material(s)</b>	CALIBRO SYSTEM - TRIPLEZERO
<b>Sequence of installation</b>	-
<b>Level of risk</b>	Low
<b>Type of protection</b>	Dehumidifying system

1. Soil
2. Existing masonry structure
3. Injections of TRIPLEZERO
4. Skirting with BI MORTAR PLASTER SEAL
5. CALIBRO RINZAFFO
6. CALIBRO P.E. INTONACO or NHL
7. X-LIME + PAINT AIR



PLEASE NOTE: The hydrophobic barrier must be realised inside brick or stone masonries and up till a such height that can't be bypassed by water

This proposed scheme (out of scale and released only for example purposes) and its implementation must be assessed and approved by the Designer and the Construction Supervisor in relation to the specific issues of the project and the building site. More information about the application, performances and technical data of the technologies that we have here described must be obtained from the product datasheets (also freely downloadable from the website [www.volteco.it](http://www.volteco.it)); those datasheets are considered part of this document.